



ASTRO RANCH MODEL 3A154A

Series: Astro Ranch

Model: 3A154A

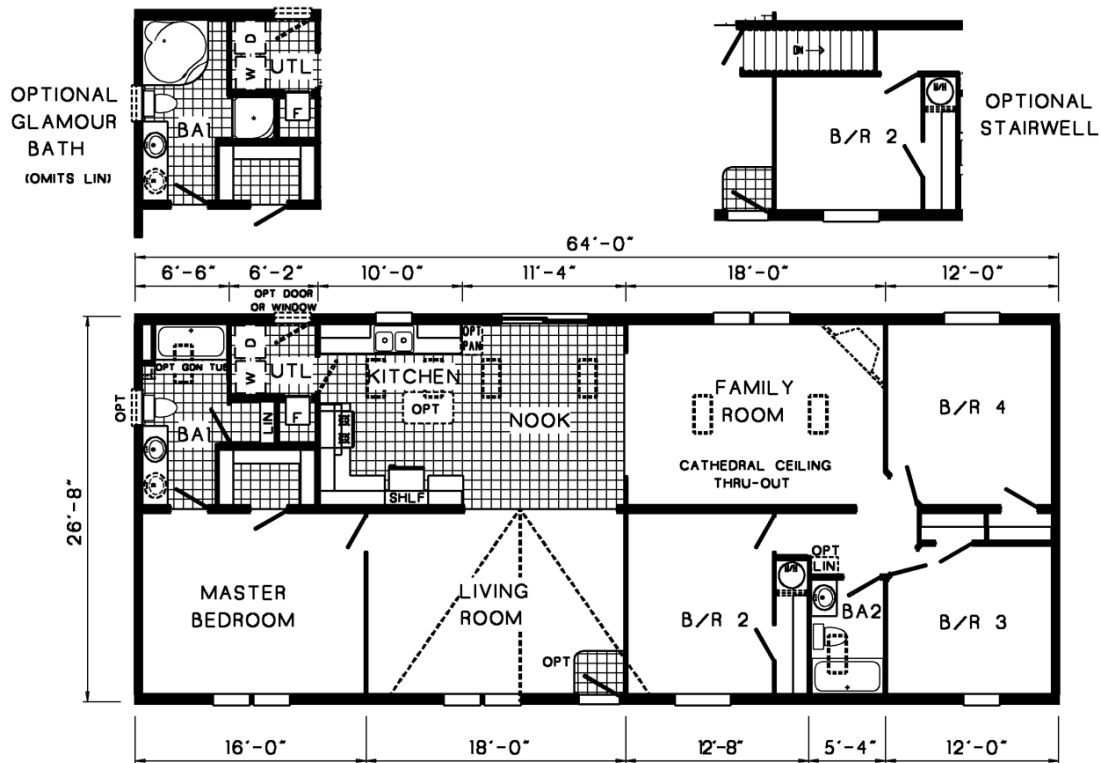
Style: Ranch

Bedrooms: 4

Bathrooms: 3

Sq. Ft.: 1707

Floor Plan



3A154-A 2864 Approx. 1707 Sq. Ft.

ASTRO
Commodore Homes of Pennsylvania



Standards and Features for Astro Ranch

Interior

- Cathedral Ceiling Throughout
- Stipple Ceiling
- 7'0" Sidewall Height
- Textured Carpet with ShawGuard Carpet Protector
- Rebond Carpet Pad
- Tackstrip Carpet Installation
- No-Wax Vinyl Floor Coverings by Congoleum
- Vinyl Wall Coverings on Gypsum
- Glass Light Shades Throughout
- Pre-Hung Door Jambs
- Non-Mortise Hinges
- Metal Interior Passage Sets
- Floor Mount Door Stops
- Smoke Detectors With Battery Back-Up
- Wire Shelving in Guest Closet
- Designer-Coordinated Window Treatments

Kitchen

- Picture Frame Raised Panel Cabinet Doors
- Brushed Nickel Cabinet Hardware
- Lined Overhead Cabinets
- Deluxe Roller Guide Drawer System
- Base and Center Shelves in Base Cabinets
- 25" High-Pressure Laminate Countertops With Laminate Edging
- No-Wax Vinyl Floor Coverings by Congoleum
- Decorative Vinyl Wall Coverings
- Stainless Steel Sink - 33x19x7 Appliances
- 30" Gas Range
- Power Range Hood with Light
- 18 Cubic Foot, No-Frost Refrigerator
- Empire Brushed Nickel Faucet

Baths

- Decorative Vinyl Wall Coverings
- 60" Tub/Showers
- One-Piece Fiberglass Shower With Glass Door in Glamour Baths
- Corner Tub in Glamour Baths
- 1.6 Gallon Per Flush Toilets
- Vitreous China Stool, Tank and Lid
- High-Pressure Laminate Countertops With Laminate Edging
- Lighted Vent Fan in Each Bath
- Picture Frame Raised Panel Cabinet Doors
- Brushed Nickel Cabinet Hardware
- Base Shelf in Vanities
- 33" High Vanities
- Empire Brushed Nickel Faucet

Bedrooms

- Switched Receptacles
- Vinyl Wall Coverings in all Bedrooms
- Egress Window Each Bedroom
- Wire Shelving in Wardrobes
- Switched Light in All Walk-In Closets

Utilities

- Washer and Dryer Area
- 100 AMP Electrical Service
- 30 Gallon Electric Water Heater with Pan
- Gas Furnace
- Air Exchanger System for Furnace
- Aluminum Heat Ducts
- In-Floor Cross-Over Heating System
- Copper Wiring Throughout
- Main Water Line Shut-Off Valve
- Air Conditioning Thermostat With 5-Wires

Insulation

- R-14 Fiberglass Insulation in Floor
- R-19 Fiberglass Insulation in Walls
- R-28 Avg. Blown Insulation in Ceiling

Exterior

- Brushed Nickel Coach Light at Front Door
- One GFI-Protected Exterior Receptacle
- Vinyl Dutch Lap Siding
- Sheathing Board Under Siding
- Shingle Roof with Fixed Eaves
- Ridgevent Roof Ventilation System
- 34x76 House-Type Front Door with 4x24 Lite and Storm Windows Door
- 32x76 Blank Outswing Rear Door
- White Aluminum Windows with Self-Storing Storm
- 12" Raised Panel Shutters on Door Side

Construction

- 2x6 Transverse Floor System with 3/4" Decking
- 2x6 Exterior Walls on 16" Centers
- 20# Roof Load

Your purchase contract including options is with your retailer who is an independent contractor, not our agent, and is responsible totally for any alterations, exchanges, additions or attachments made in or to your home.

All descriptive representations of the products on this brochure are believed to be correct at the time of publication. However, due to continued product improvement and changes in suppliers design and production, accuracy cannot be guaranteed. Therefore, equipment colors, material specifications, prices and model availability are subject to change



Commodore Homes of Pennsylvania

without notice.

© 2010 The Commodore Corporation, All Rights Reserved