



## ASTRO FLEX MODEL 3A165A

Series: Astro Flex

Model: 3A165A

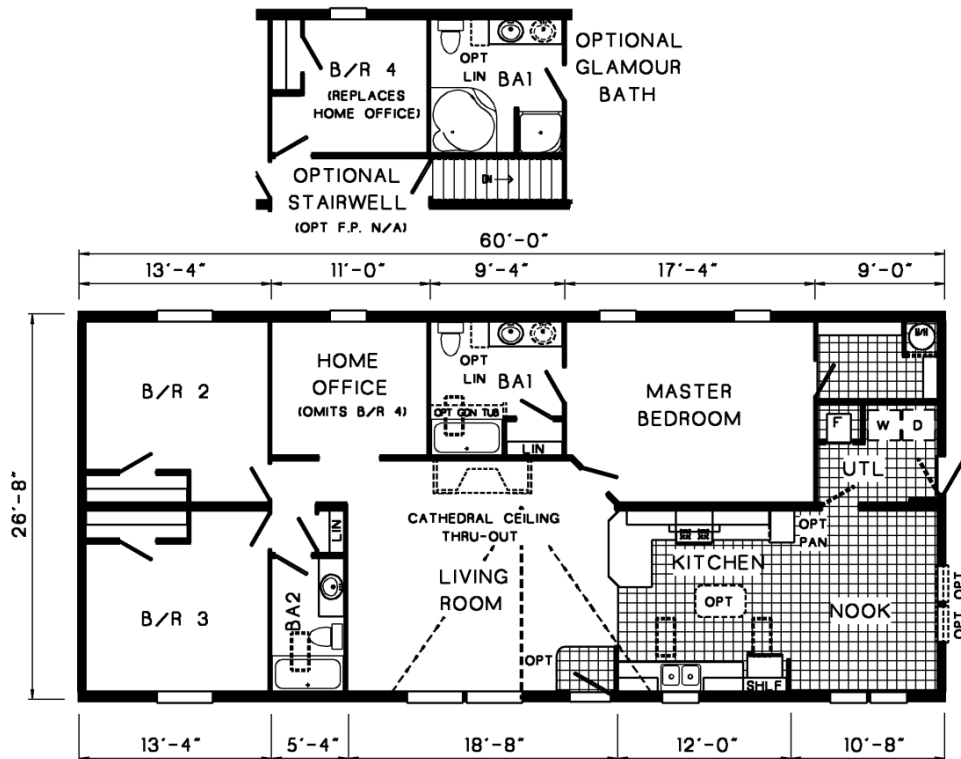
Style: Ranch

Bedrooms: 3

Bathrooms: 2

Sq. Ft.: 1600

### Floor Plan



3A165-A 2860 Approx. 1600 Sq. Ft.

ASTRO  
Commodore Homes of Pennsylvania



## Standards and Features for Astro Flex

### Interior

- Cathedral Ceiling Throughout
- Stipple Ceiling
- 7'0" Sidewall Height
- Textured Carpet with ShawGuard Carpet Protector
- Rebond Carpet Pad
- Tackstrip Carpet Installation
- No-Wax Vinyl Floor Coverings by Congoleum
- Vinyl Wall Coverings on Gypsum
- Glass Light Shades Throughout
- Pre-Hung Door Jambs
- Non-Mortise Hinges
- Metal Interior Passage Sets
- Floor Mount Door Stops
- Smoke Detectors With Battery Back-Up
- Wire Shelving in Guest Closet
- Designer-Coordinated Window Treatments

### Kitchen

- Cathedral Ceiling Throughout
- Stipple Ceiling
- 7'0" Sidewall Height
- Textured Saxony Carpet
- Rebond Carpet Pad
- Tackstrip Carpet Installation
- No-Wax Vinyl Floor Coverings by Congoleum
- Vinyl Wall Coverings on Gypsum
- Glass Light Shades Throughout
- Pre-Hung Door Jambs
- Non-Mortise Hinges
- Metal Interior Passage Sets
- Floor Mount Door Stops
- Smoke Detectors With Battery Back-Up
- Wire Shelving in Guest Closet
- Designer-Coordinated Window Treatments

### Baths

- Decorative Vinyl Wall Coverings
- 60" Tub/Showers
- One-Piece Fiberglass Shower With Glass Door in Glamour Baths
- Corner Tub in Glamour Baths
- 1.6 Gallon Per Flush Toilets
- Vitreous China Stool, Tank and Lid
- High-Pressure Laminate Countertops With Laminate Edging
- Lighted Vent Fan in Each Bath
- Picture Frame Raised Panel Cabinet Doors
- Brushed Nickel Cabinet Hardware
- Base Shelf in Vanities
- 33" High Vanities
- Empire Brushed Nickel Faucet

### Bedrooms

- Switched Receptacles
- Vinyl Wall Coverings in all Bedrooms
- Egress Window Each Bedroom
- Wire Shelving in Wardrobes
- Switched Light in All Walk-In Closets

### Utilities

- Washer and Dryer Area
- 100 AMP Electrical Service
- 30 Gallon Electric Water Heater with Pan
- Gas Furnace
- Air Exchanger System for Furnace
- Aluminum Heat Ducts
- In-Floor Cross-Over Heating System
- Copper Wiring Throughout
- Main Water Line Shut-Off Valve
- Air Conditioning Thermostat With 5-Wires

### Insulation

- R-14 Fiberglass Insulation in Floor
- R-19 Fiberglass Insulation in Walls
- R-28 Avg. Blown Insulation in Ceiling

### Exterior

- Brushed Nickel Coach Light at Front Door
- One GFI-Protected Exterior Receptacle
- Vinyl Dutch Lap Siding
- Sheathing Board Under Siding
- Shingle Roof with Fixed Eaves
- Ridgevent Roof Ventilation System
- 34x76 House-Type Front Door with 4x24 Lite and Storm Windows Door
- 32x76 Blank Outswing Rear Door
- White Aluminum Windows with Self-Storing Storm
- 12" Raised Panel Shutters on Door Side

### Construction

- 2x6 Transverse Floor System with 3/4" Decking
- 2x6 Exterior Walls on 16" Centers
- 20# Roof Load

Your purchase contract including options is with your retailer who is an independent contractor, not our agent, and is responsible totally for any alterations, exchanges, additions or attachments made in or to your home.



# Commodore Homes of Pennsylvania

---

All descriptive representations of the products on this brochure are believed to be correct at the time of publication. However, due to continued product improvement and changes in suppliers design and production, accuracy cannot be guaranteed. Therefore, equipment colors, material specifications, prices and model availability are subject to change without notice.

© 2010 The Commodore Corporation, All Rights Reserved